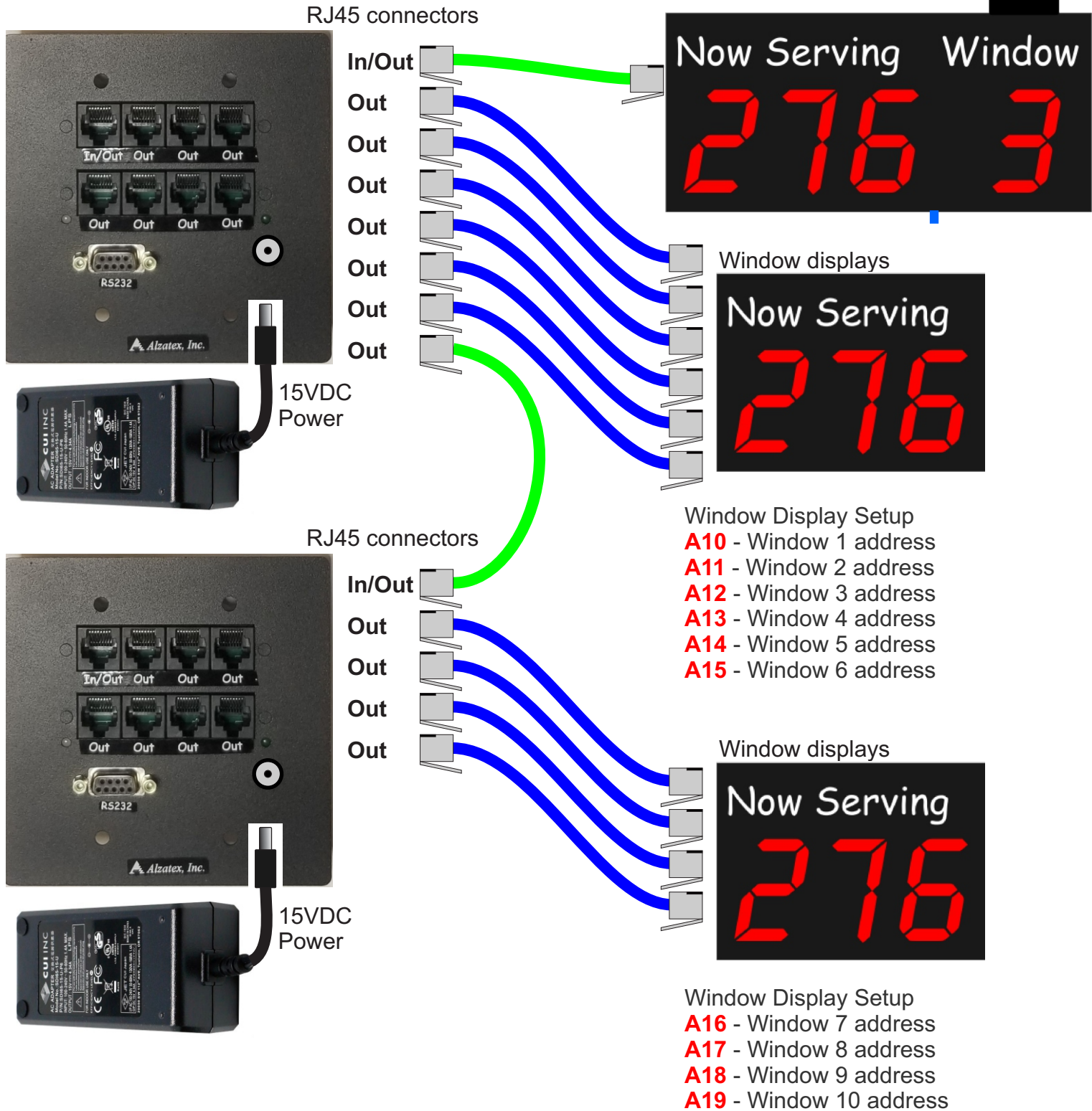


# Take-a-Number Wiring diagram

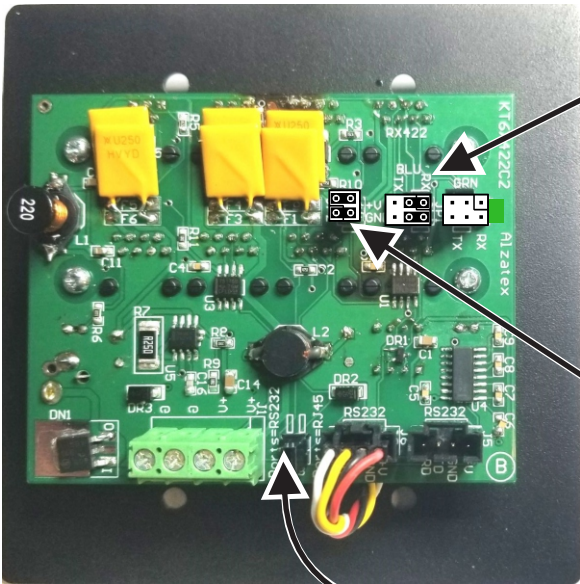
MP505B\_NSW\_RF4



Up to 64 RFTX15B transmitters



# Take-a-Number Wiring diagram



The Blue pair on Port 1 is input.  
JP1 1-3, 2-4 = Input

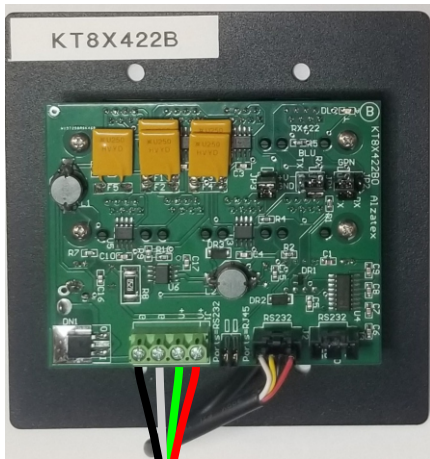


Do not install jumpers on JP2

JP3 Jumpers apply power to the OR,BN pairs of IN/OUT jack.



JP4 pins 1-2  
JP4 pins 3-4



4-Cond, 18GA

12-15VDC  
Power Supply

This unit may be powered from either the front or rear connector.

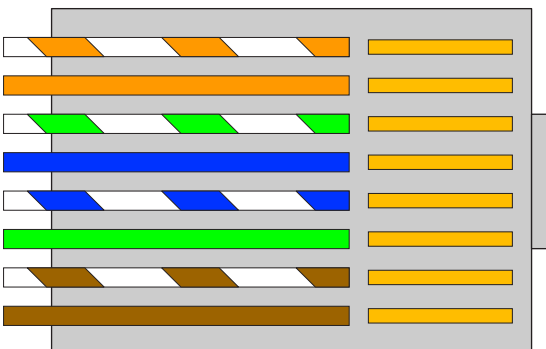


The KT8X422B fits into a double gang electrical box.

## Optional Rear Power Input

12-15VDC power input			
G	Ground	Black	
G	Ground	White	
V	12-15VDC	Green	
V	12-15VDC	Red	

## CAT-5 Cable OUT port Wiring



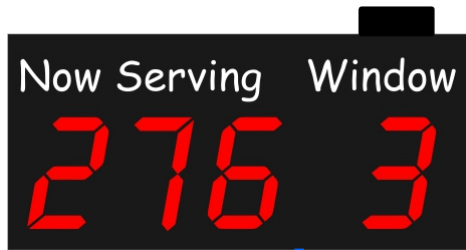
(1) WH/OR
(2) OR
(3) WH/GN
(4) BL
(5) WH/BL
(6) GN
(7) WH/BN
(8) BN

1 Data Channel

Ground  
+ Power  
Ground  
Data P  
Data N  
+ Power  
Ground  
+ Power

# Take-a-Number Wiring diagram

## MP505B Connecting the Speaker

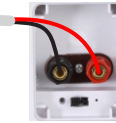


The Volume Control is on the bottom side of the display



Speaker Connection

Use 18/2 for distances 5ft plus.



Rear of Speaker



You can parallel up to 2 speakers if you need better coverage.

**mp502.ini**

```
[serial]
baud1=2400
baud2=9600
command digits=5
address=0
slave mode=0
copy wireless=1
error level=error
```

```
[voice]
mode=window number
language=englishm
send commands=0
```

```
[beeper]
volume=off
sequence=s
```

```
[tat]
add space=0
show window=1
window position=right
command prefix=10
alpha=0
reverse keyfob=0
use lamps=0
debug=0
digits=3
```

## Installation

Connect the RF492A module to the RS232-2 port on the MP502A board using a 4-pin cable with Molex connectors.

See the user manual for learning the transmitters.

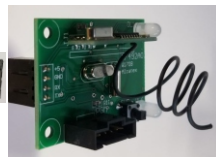
RF492A setup mode:

**N00** - Multi-Window mode

Cable: 4-conductor with Molex

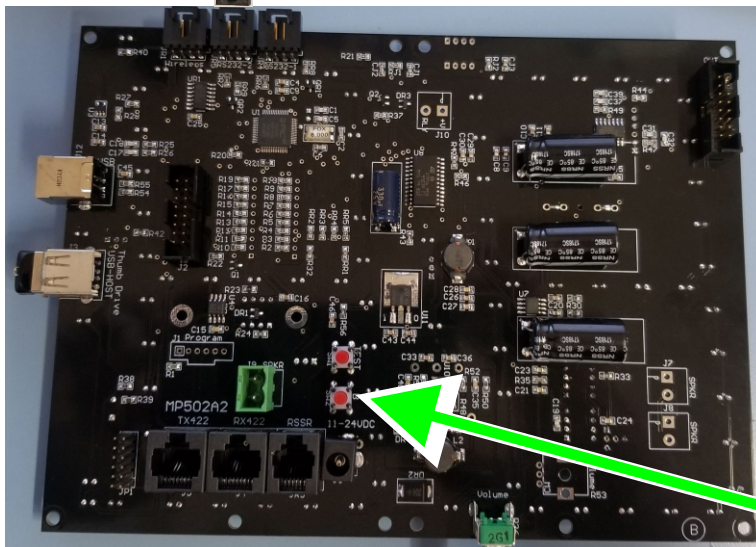
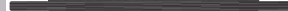


RS232-2 Port



RF492A Wireless Receiver

RF492A



Learn Button

Up to 64 RFTX15B transmitters



# Take-a-Number Wiring diagram