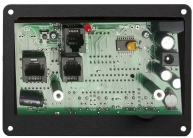


# TMR019B4-FM



## Product

Count UP/DOWN Timer 4-DIGIT Display

### Description:

Count Up/Down Timer with 4 buttons, knob, 4-digit seven segment Display with 0.56" high digits and Red-Yellow-Green warning LEDs, Black anodized AL, Flush-mount.

**Item:** TMR019B4-FM

**UPC:** 788581650165

**EAN:** 0788581650165

**Stock Status:** Usually in stock.

**Dimensions:** 4.6" x 3.25" x 1.5"

**Weight:** 0.5 lbs.

**MSRP:** \$299.00

## Specifications

- Two Serial data RJ11 connectors for accessories.
- One RS422 output with RJ45 connector for accessories.
- Ground closure 600mA output for optional beeper. (not included).
- Construction: Metal flush mount plate, black powder coated finish.
- Power requirements: 10-18 VAC or 12-24 VDC power.
- Current consumption: 100ma.

## Features

- Easy to use. Press Reset. Turn knob to set the desired time. Press Start.
- Subsequent timing cycles. Press Reset. The time previously used will be loaded. Press Start.
- Count Up elapsed Timer.
- Count Down time remaining Timer.
- 0-99.59 MM:SS or 0-99:59 HH:MM.
- User-programmable Green, Yellow and Red warning Indicators.
- The Select button selects between setting hours, minutes and seconds.
- The Mode button selects between Count Up and Count Down modes. You may change between Count Up and Count Down modes while the timer is running. In Count Down mode, the timer stops when it reaches zero. In Count Up mode, the timer keeps running when the preset time is reached.
- Four-digit LED seven-segment Display with 0.56" high digits.
- Internal beeper provides audible sound when the timer reaches zero.
- Button to turn beeper on/off.
- Connect two or more TimeKeepers™ together. One becomes the timer, and the others become remote displays.
- Four-digit count up timer settable to Hour:Min or Min:Sec.
- Four-digit count down timer settable to Hour:Min or Min:Sec.
- Made of ruggedized aluminum construction.

## In the Box

- TMR019B4-FM Count up/down timer
- M8BK007F 7ft, Cat-5, 8-conductor cable.
- RC Reference guide
- WD Wiring diagram
- Not Included: Transformer

## Required Accessories

- WT12VAC1200MA-RA 12V AC, 1200mA transformer

## Optional Accessories

Works with any size Alzatex display, Red-Yellow-Green indicator or TimeKeeper™. Examples:

- DSP254B Large LED wall display
- DSP506B Large LED wall display
- DSP704B Large LED wall display
- KT6X422B Six Port RS422 Extender Driver module.
- RYG11ABBK Red-yellow-green indicator lamps

If you have a Crestron, AMX, RCI or PC, use the RS232 adapter

- PS1DB9B RS232 to RJ11 jack converter