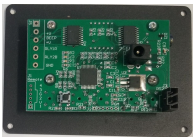
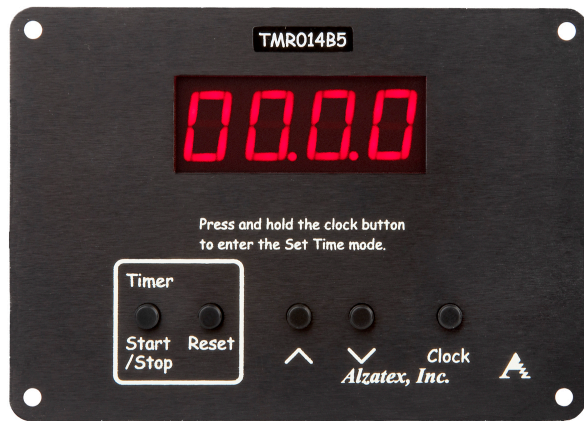


TMR016B5-FM



Product

Flush-Mount Count Up/Dn Timer

Description:

Flush-mount Count Up/Down Timer with built-in time-of-day clock, Black anodized AL, Flush-mount.

Item: TMR016B5-FM

UPC: 788581659533

EAN: 0788581659533

Stock Status: Usually in stock.

Dimensions: 4.6" x 3.25" x 1.5"

Weight: 0.4 lbs.

MSRP: \$149.00

Specifications

- Ground closure 800mA output for optional beeper. (not included).
- Ground closure 800mA output indicates timer running state.
- Ground closure outputs can drive resistive or inductive loads.
- Power requirements: 6-15VAC or 8-20VDC.
- Current consumption: 100ma.
- Construction: Metal flush mount plate, black powder coated finish.

Features

- Count Down Timer. (0 to 99.59 MM:SS).
- Count Up Timer.
- Built-in time-of-day Clock displays hours/minutes in 12/24 hour time or minutes/seconds.
- Press Reset to select timer mode.
- Press the up/down buttons to set desired time to the nearest minute.
- Press the Start/Stop button to start the timer.
- Four-digit LED seven-segment Display with 0.56" high digits.
- Made of ruggedized aluminum construction.

In the Box

- TMR016B5-FM Count up/down timer with TOD clock
- RC Reference guide
- WD Wiring diagram
- Not Included: Transformer, cables

Required Accessories

- WT12VAC1200MA-RA Wall transformer