

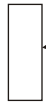
# Photo Electric Beam Installation Instructions

**Alternative A.** Both the transmitter and the receiver are at the same end. A reflector reflects the beam back to the receiver. The maximum distance between the transmitter/receiver and the reflector is 18 feet.

Transmitter



Receiver



Reflector



Using a photo beam  
to start and/or stop  
a timer.

**Alternative B.** The transmitter is at one end and the receiver is at the other end. The maximum distance between the transmitter and the receiver is 35 feet.

Transmitter

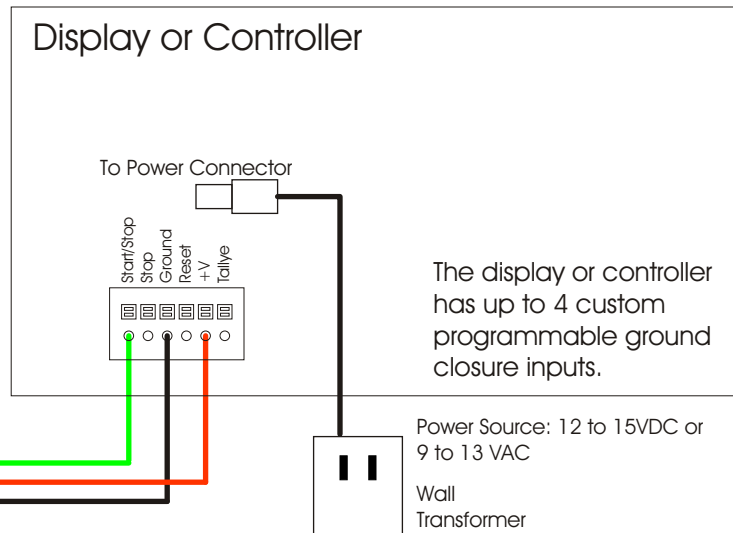
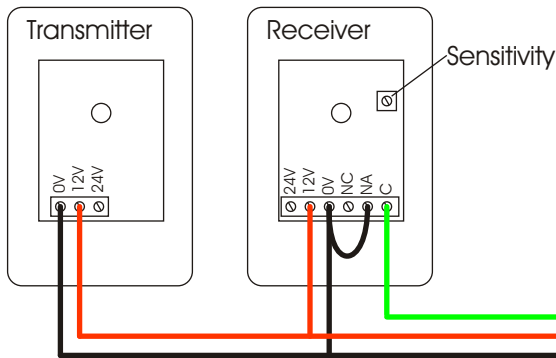


Receiver



## IRE-35 Outdoor/Indoor Photoelectric Transmitter and Receiver

The IRE-35 is housed in a shockproof and waterproof case.



Install the transmitter and receiver side by side when using a reflector, or facing each other when not using a reflector. Be careful to make sure that the infrared beam is closely aligned. Unpredictable results may occur when the person or object passing through the reflected beam has light colors or is shiny.

Connect the wire and power up the units. The red LED on the transmitter will light up. The red LED on the receiver will be on if the units are not aligned.

Connect the probes of a voltmeter to the test point pins on the receiver PC board. Obtain a reading of 0.4 volts DC, by accurately positioning the transmitter and receiver.

There is a trimmer on the receiver to adjust sensitivity. For faster detection, the sensitivity can be increased by turning the trimmer counterclockwise, or decreased by turning the trimmer clockwise. At short beam distances beam saturation may slow detection if the sensitivity is too high and the moving objects small and fast.

For outdoor use, seal the holes on the transmitter and receiver using the supplied rubber sealing material. Install covers and secure them using the supplied screws.

Walk test the units to verify correct operation.